

TECNAMIC

Dynamic Drive Technology

Special solutions

Drive pulleys and wheels



Special solutions

We support and advise you with calculating and designing of your customised drive. We draw up the necessary documents for the calculations of your drive, together with technical 2D or 3D drawings and also, if required, FEM load simulations. In view of our manufacturing expertise in the field of belts, we are the ideal partner for your drive solutions.

Our expertise:

- › Drive pulleys or wheels in diameters of up to 3000 mm
- › Materials: Grey cast iron (EN-GJL-200 to EN-GJL-300), spheroidal graphite iron (EN-GJS-400 to EN-GJS-600), cast steel (GS) and steel
- › Shaft/hub connections: Finished bore with feather keyway, taper bush or clamping elements etc.
- › Balance qualities: Q16, Q6.3 or Q2.5 in one or two levels according to DIN ISO 21940-11
- › Certificates and technical documentation in line with individual customer requirements
- › Surface treatment to customer specification (e.g. coating, chemical surface treatment)
- › Drive optimisation with using our high performance belts manufactured in Europe

V-pulleys



V-pulley
2-piece design



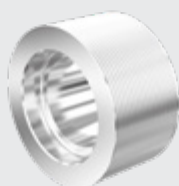
V-pulley
Solid pulley



Power belt V-pulley
Plate pulley



TB V-pulley
Spoked pulley

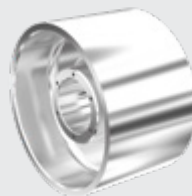


Ribbed belt pulley

Flywheels and flat belt pulleys



V-belt flywheel



Flat belt pulley



Flywheel

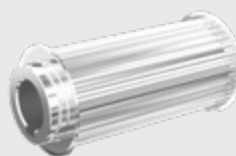


TB flat belt pulley

Timing belt pulleys



Timing belt pulley
with brake disc



Timing belt pulley

Sprockets and spur gears

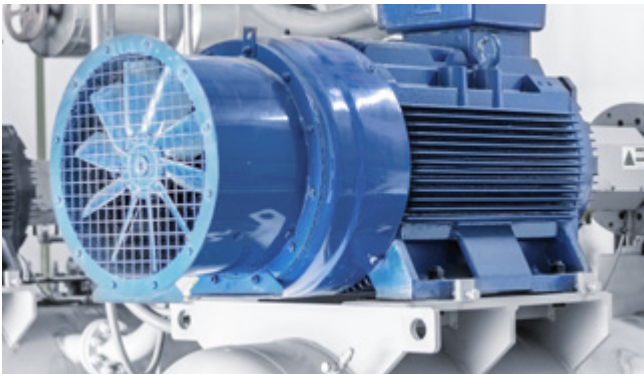


Sprocket



Spur gear

Industry solutions/Application examples



Pumps & compressors



Printing machines & paper manufacturing



Chippers for forestry and agriculture



Shredders for plastics, glass or textile industry



Mobile and stationary crushers

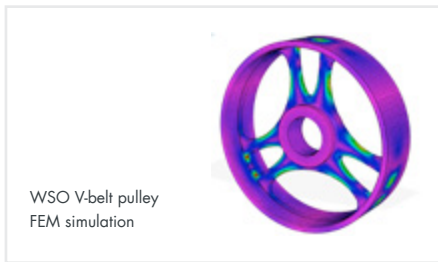


Agricultural & forestry machinery

WSO V-belt pulleys

Weight - Stress - Optimised

- Ideally suited for drives subject to heavy shock loads such as compressors, crushers, shredders, etc.
- Use of high-quality cast iron material
- Derived tension curves through FEM bionically optimised arm structure
- Direction of rotation independent application options
- Up to 50% weight saving compared to comparable belt pulleys in that performance class
 - in combination with our European-manufactured high performance belts
- Ideally suited for mobile systems
- Perfect for high speeds and rpms
- Extremely quiet at high speeds
- Application-optimised solutions according to customer specification



Tecnamic GmbH

Zunftweg 4
59457 Werl
Germany

T +49 2922 9273-888
F +49 2922 9273-880
E info@tecnamic.com



TECNAMIC

www.tecnamic.com